



Waterfront Seattle Update Shoreline and Coastal Planners Group

July 11, 2017





151st St
4-9-52

CORONA

COMMERCIAL



SUNDE & D'EVERS

MAIN STORE COLMAN

SHIP CHANDLER
HIP RIGGER
HIP STORE
AIL MAKER

T
B







ELLIOTT BAY

Seawall Project Phase 2

Pier 62/63 Rebuild Phase 1
Seawall Project Phase 1 between Pine and Virginia streets
(2017-2019)

Seattle Multimodal Terminal at Colman Dock Project
(2017-2023)

Seawall Project Phase 1
(2013-2017)

- WATERFRONT SEATTLE PHASE 1 AREA
- SEAWALL PROJECT PHASE 1
- SEAWALL PROJECT PHASE 2
- SR 99 TUNNEL PROJECT
- SEATTLE MULTIMODAL TERMINAL AT COLMAN DOCK PROJECT
- PARTNER PROJECTS

SR 99 Tunnel Project
(2011-early 2019)

Waterfront Seattle
Phase 1 (2019+)

Project construction dates are tentative and subject to change

Sources: City of Seattle GIS, Google maps, SDOT 2010 Bike Map, ROMA 2002 Urban Design Assessment





Seattle's waterfront park comes into focus

The basic outlines of the ambitious park, really four big parks connected by a promenade, are now emerging. There are very sensible design decisions being made, but can the city pull off such a spectacular plan?

By David Brewster

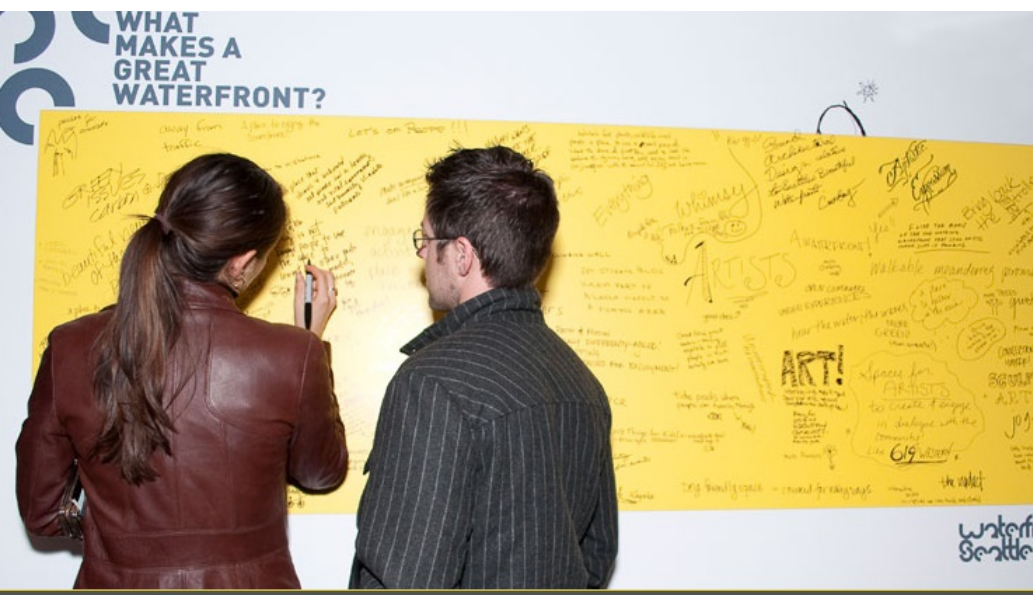
Print | Email | [Tweet](#) | [Like](#) 53

After all the battles over the Viaduct and the deep-bore tunnel, are we going to manage to create a splendid waterfront park for Seattle? The desire is there, and the setting is certainly spectacular. But it won't be easy, particularly given Seattle's way of building and bungling major projects.

It's now possible to get a better idea of what might happen. After the successful vote for the tunnel last month, the guardedness has been relaxed. Additionally, more details are being filled in, so the design is moving from a generic 26-block esplanade into something far more tailored to the conditions of the spaces. What follows are some of the things I learned from tagging along on a tour put together by the Seattle Parks Foundation and guided by the two principal city officials in charge, city planner Marshall Foster and



City of Seattle/James Corner Field Operations





STROLLING



VIEWING



DOG-WALKING



SITTING





MOVIES



CONCERTS



BOATING



PICNICKING

STRATEGIC PLAN



- Built on public input on Framework Plan and Concept Design
- Engaged broader business / philanthropic community in “how we get it done”
- Established public/private funding plan:
 - State and City funding
 - Philanthropy
 - Property Owner Assessment (LID)



education



FUNDRAISING

convening

LEADERSHIP

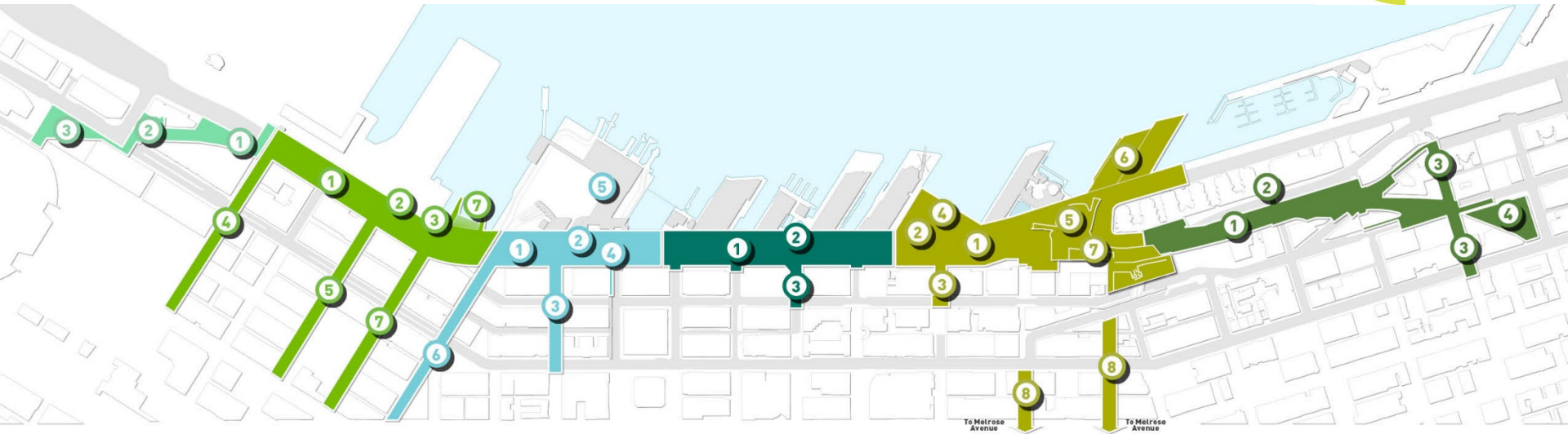
advocacy

STEWARDSHIP

activation



WATERFRONT SEATTLE PROGRAM



RAILROAD WAY	PIONEER SQUARE	TRANSIT HUB	HISTORIC PIERS	CENTRAL PUBLIC SPACE	BELLTOWN
<ul style="list-style-type: none"> 1 WATERFRONT 2 PIONEER SQUARE 3 STADIUMS 	<ul style="list-style-type: none"> 1 ALASKAN WAY 2 WATERFRONT PROMENADE 3 WASHINGTON ST. BOAT LANDING 4 S. KING ST. 5 S. MAIN ST. 6 S. WASHINGTON ST. 7 HABITAT INTERTIDAL ZONE 	<ul style="list-style-type: none"> 1 ALASKAN WAY 2 WATERFRONT PROMENADE 3 COLUMBIA ST. 4 MARION ST. PEDESTRIAN BRIDGE 5 COLMAN DOCK TERMINAL REPLACEMENT 6 YESLER WAY 	<ul style="list-style-type: none"> 1 ALASKAN WAY 2 WATERFRONT PROMENADE 3 SENECA ST. 	<ul style="list-style-type: none"> 1 ELLIOTT WAY 2 WATERFRONT PROMENADE 3 UNION ST. 4 WATERFRONT PARK REBUILD 5 OCEAN PAVILION 6 PIERS 62/63 PHASE 1 REBUILD 7 OVERLOOK WALK 8 PIKE/PINE STS. 	<ul style="list-style-type: none"> 1 ELLIOTT WAY 2 LENORA ST. PED BRIDGE RETROFIT 3 BELL ST. 4 PORTAL PARK

500 ft.

BUDGET



Parks – Central Waterfront Piers
Rehabilitation - \$95M

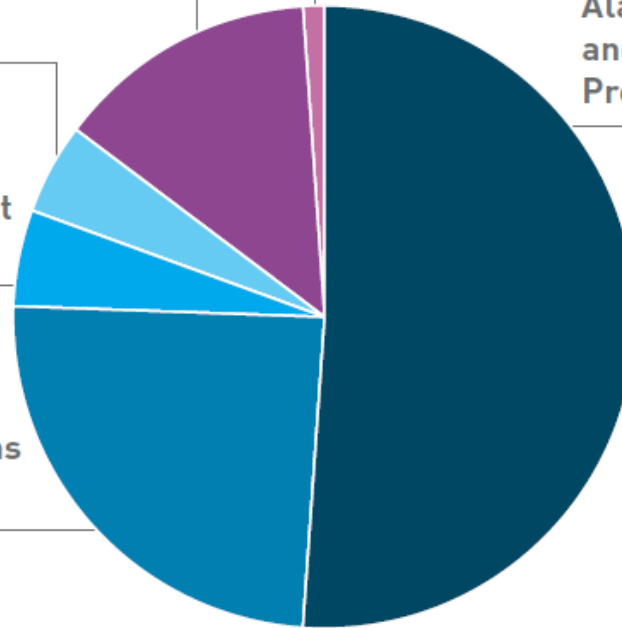
Local Improvement District (LID)
administration - \$7M

Parks – Aquarium
Expansion - \$34M

Alaskan Way Roadway
and Pedestrian
Promenade - \$345M*

Pike Place Market
PC-1 North Market
Front Entrance Project
- \$34M

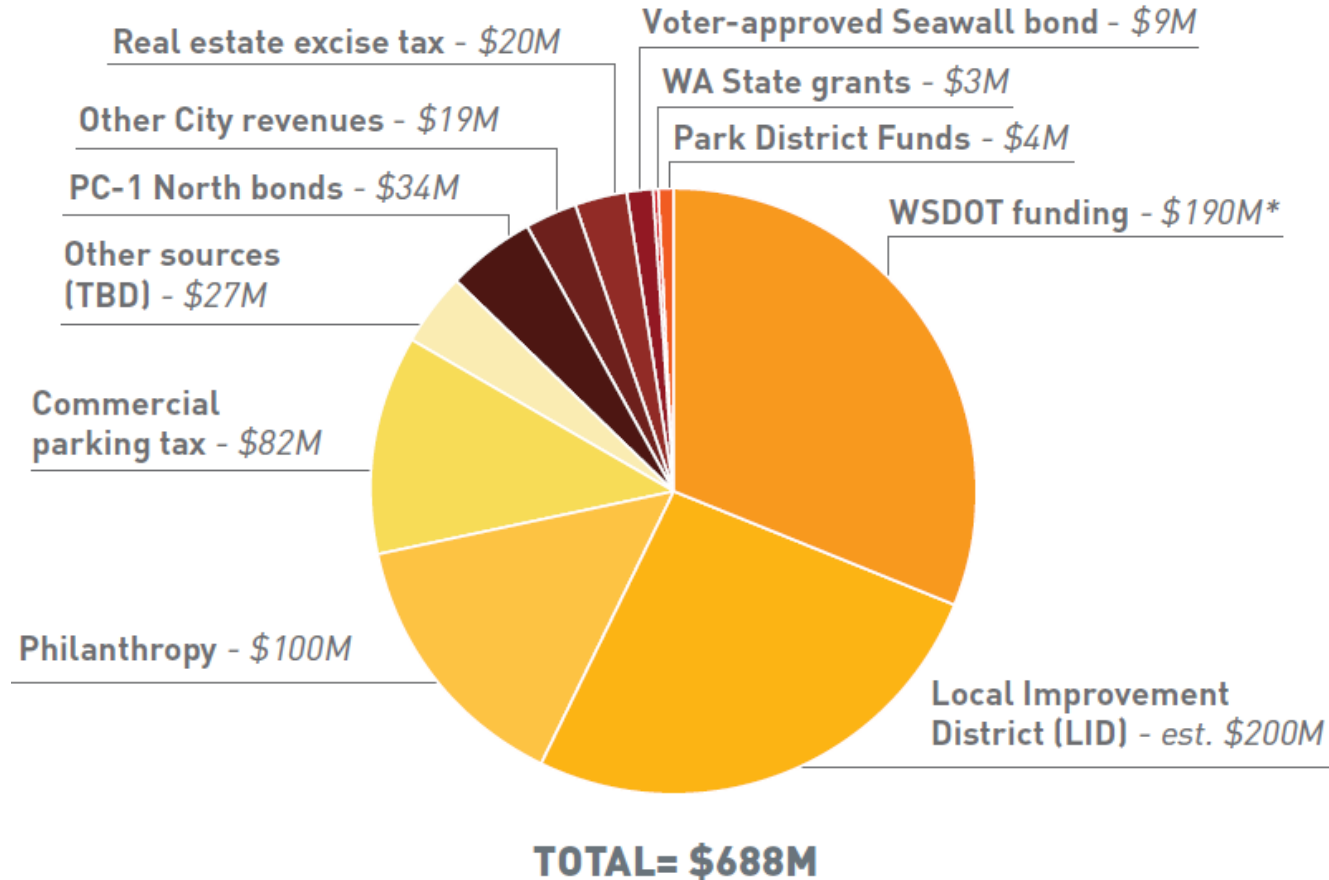
Overlook Walk and
East/West Connections
- \$173M



TOTAL= \$688M

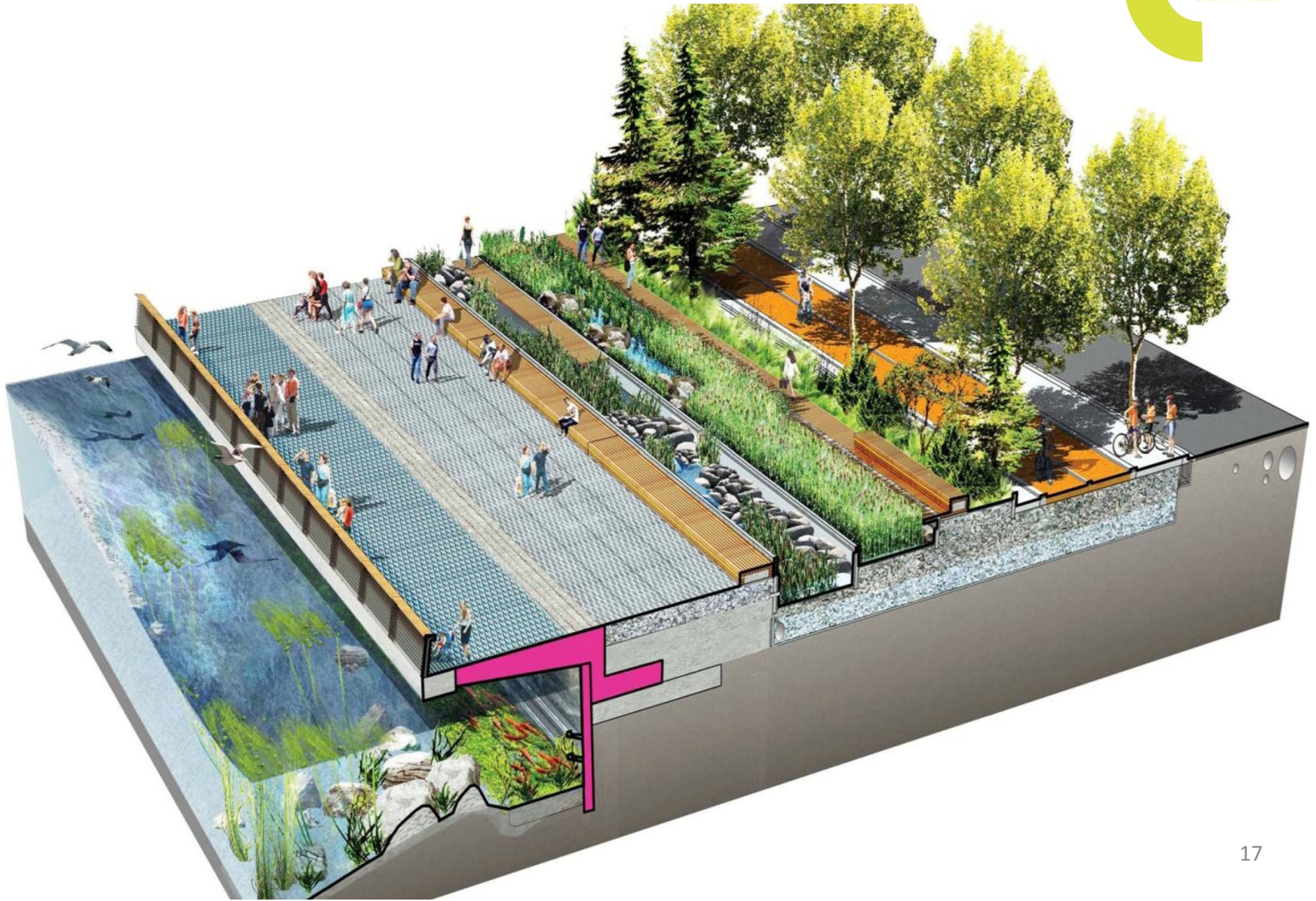
*Does not include WSDOT-funded Marion Street Pedestrian Bridge over Alaskan Way (pending future agreement)

FUNDING

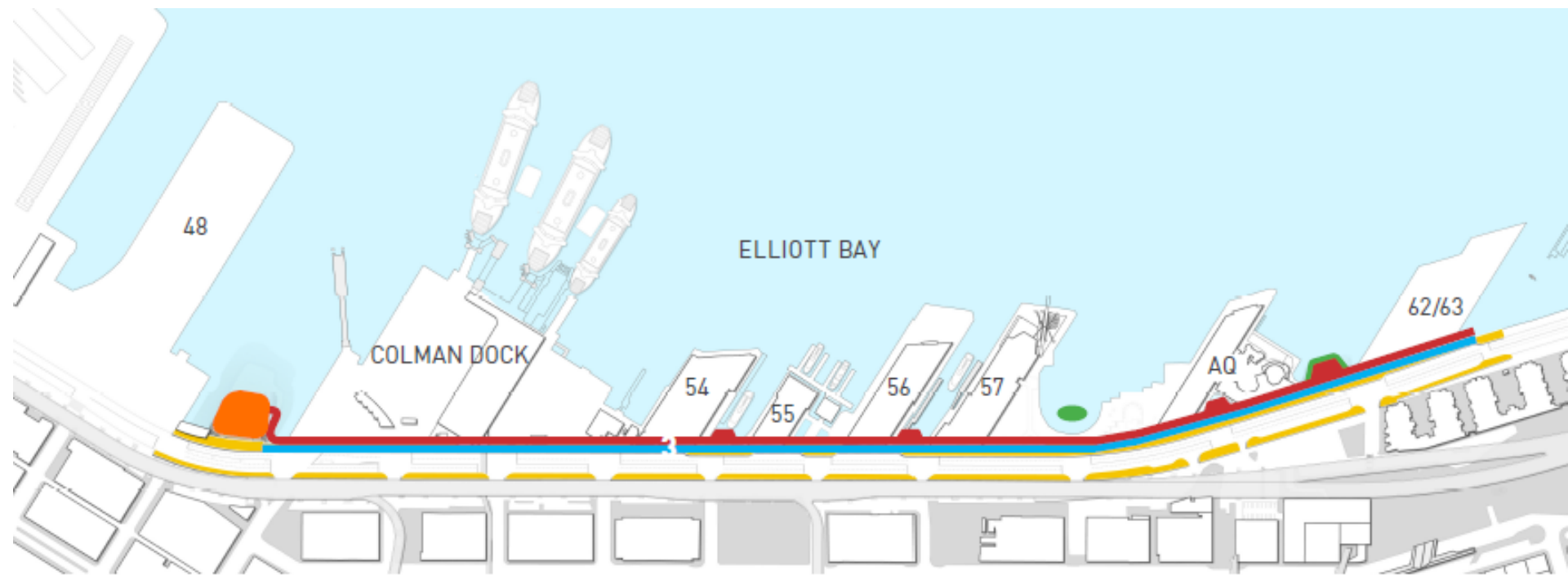


*Does not include WSDOT-funded Marion Street Pedestrian Bridge over Alaskan Way (pending future agreement)

SEAWALL



SEAWALL HABITAT ENHANCEMENT



-  HABITAT BEACH
-  HABITAT BENCH
-  SUBSTRATE ENHANCEMENT
-  WALL TREATMENTS

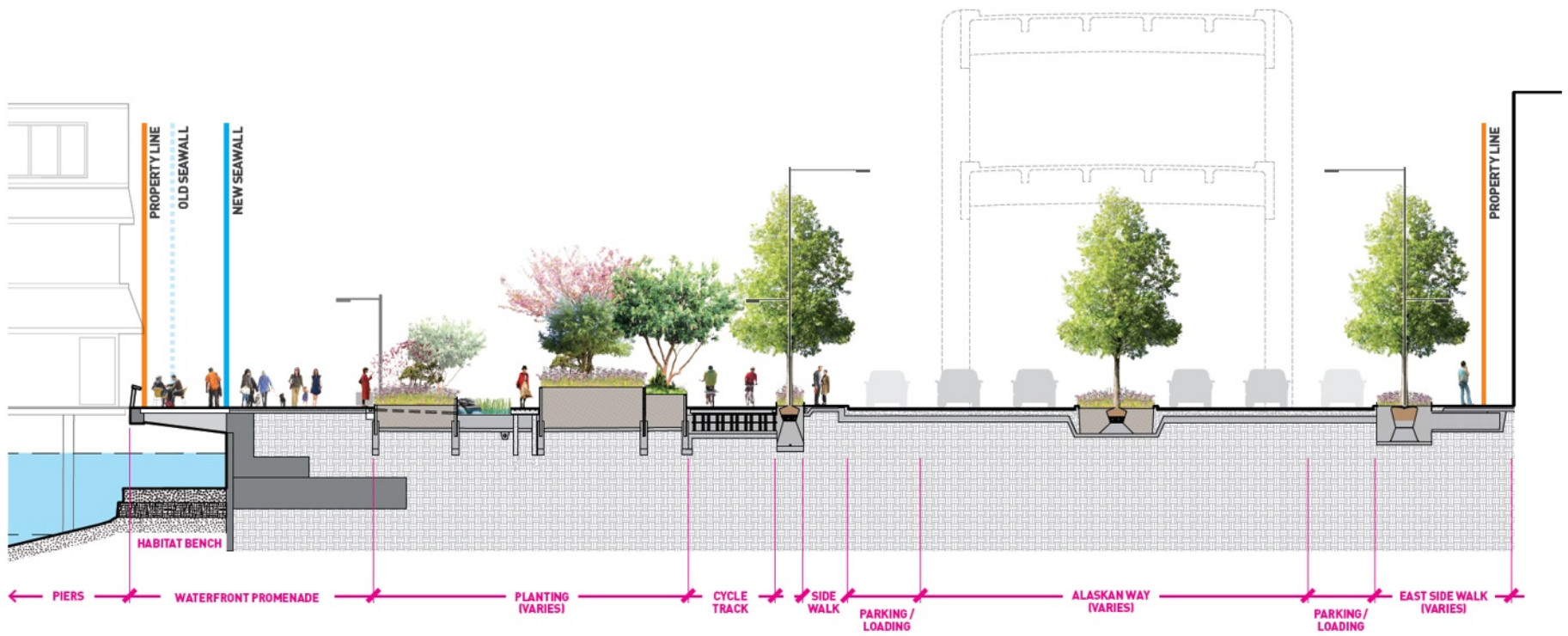


SUSTAINABILITY
NEW ELLIOTT BAY SEAWALL
FISH AND WILDLIFE
MIGRATION CORRIDOR





TYPICAL SECTION



INTERSECTION DESIGN



PROMENADE



KEY MAP



PROMENADE



TERRACES



FIREHOUSE SLIP



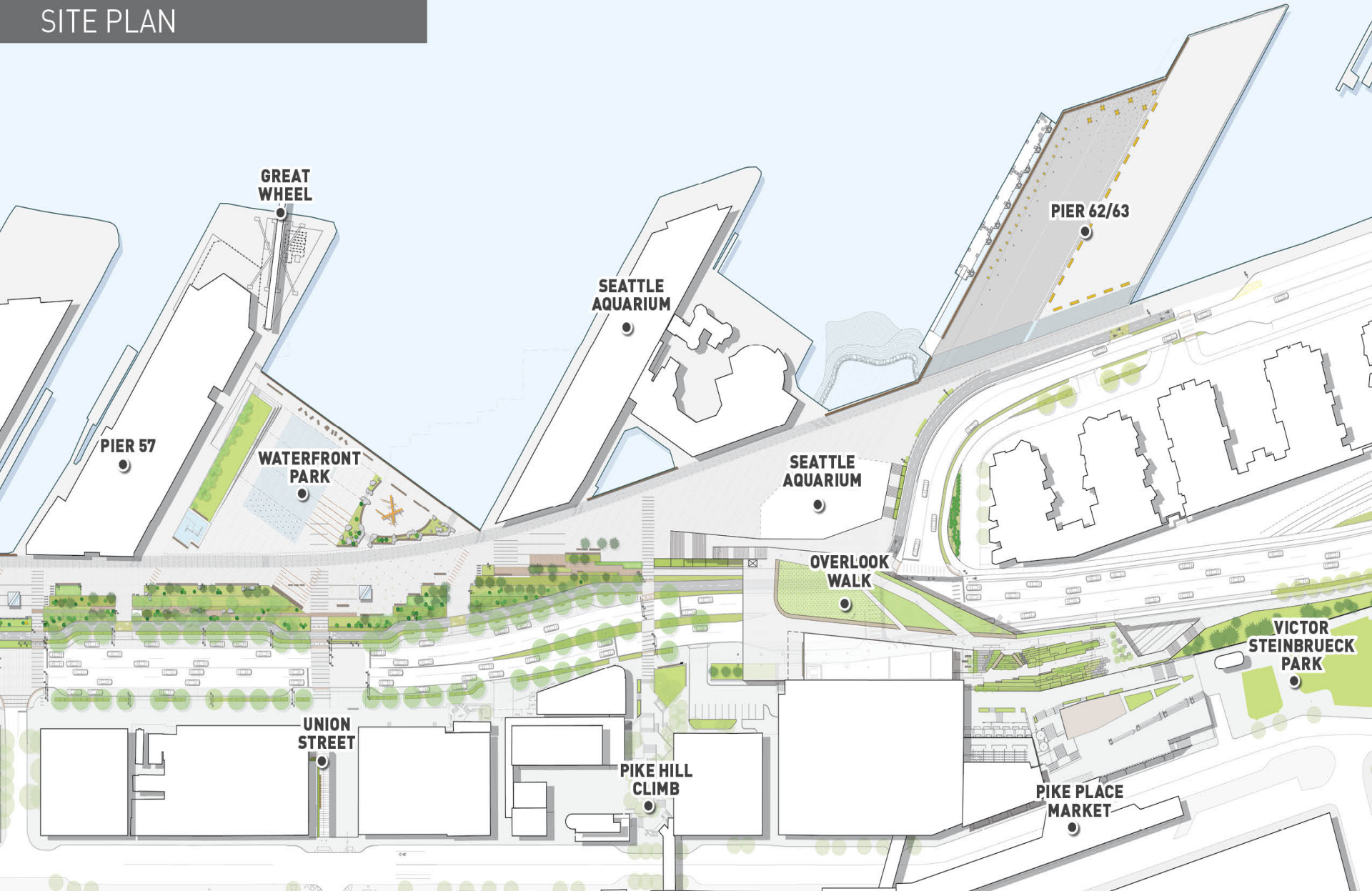
COLMAN DOCK



PIONEER SQUARE



CENTRAL PUBLIC SPACE SITE PLAN



WATERFRONT PARK SITE PLAN



UNION STREET IMPROVEMENTS



UNION STREET DESIGN
WESTERN AVE
VIEW TOWARD WATERFRONT



MARKETFRONT



OVERLOOK WALK

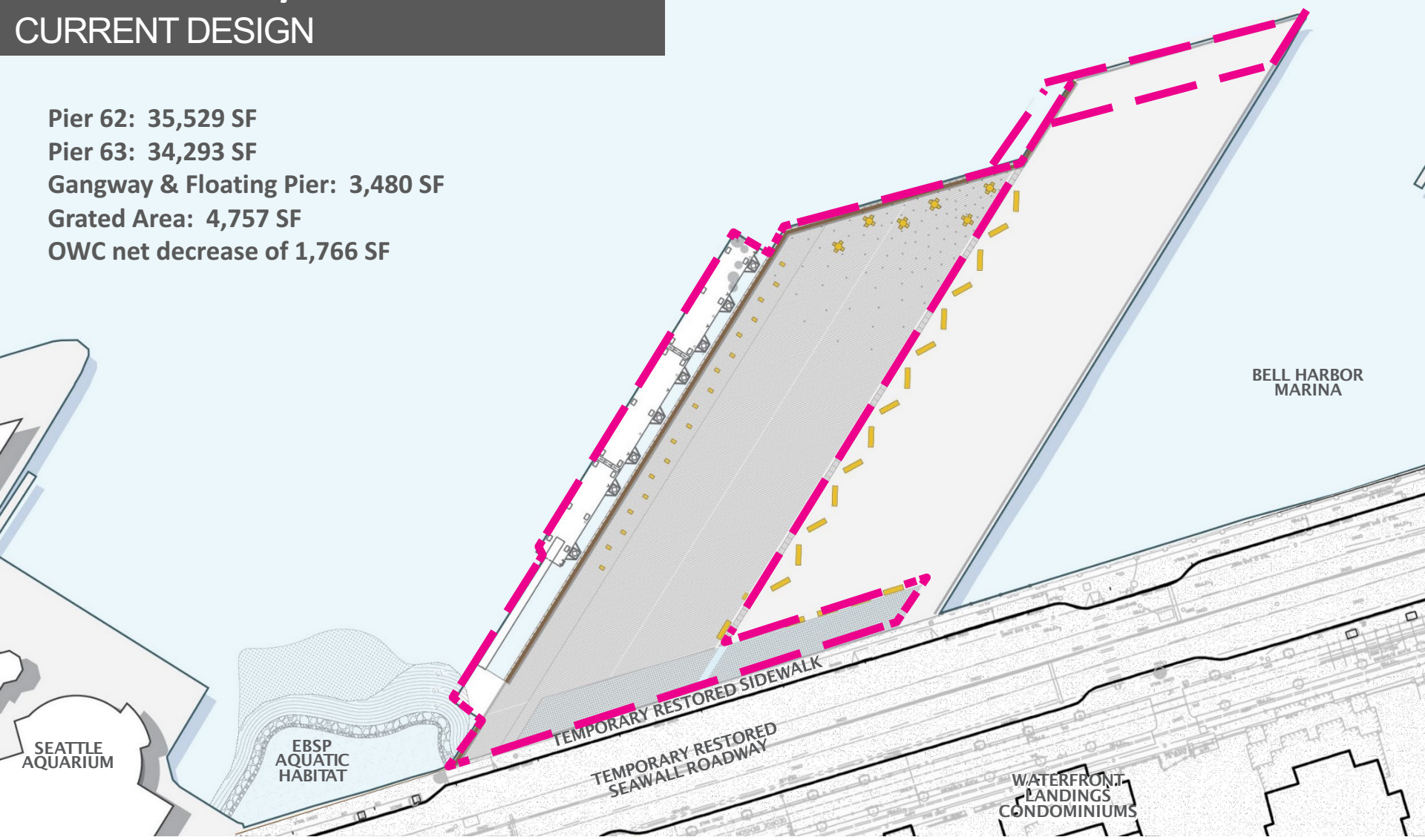


PIER 62/63



2017: PIER 62/63 REBUILD CURRENT DESIGN

Pier 62: 35,529 SF
Pier 63: 34,293 SF
Gangway & Floating Pier: 3,480 SF
Grated Area: 4,757 SF
OWC net decrease of 1,766 SF



PIER 62 HABITAT – BUILDING ON THE ELLIOTT BAY SEAWALL PROJECT



Main goals, as determined by Project Team in consultation with regulatory agencies:

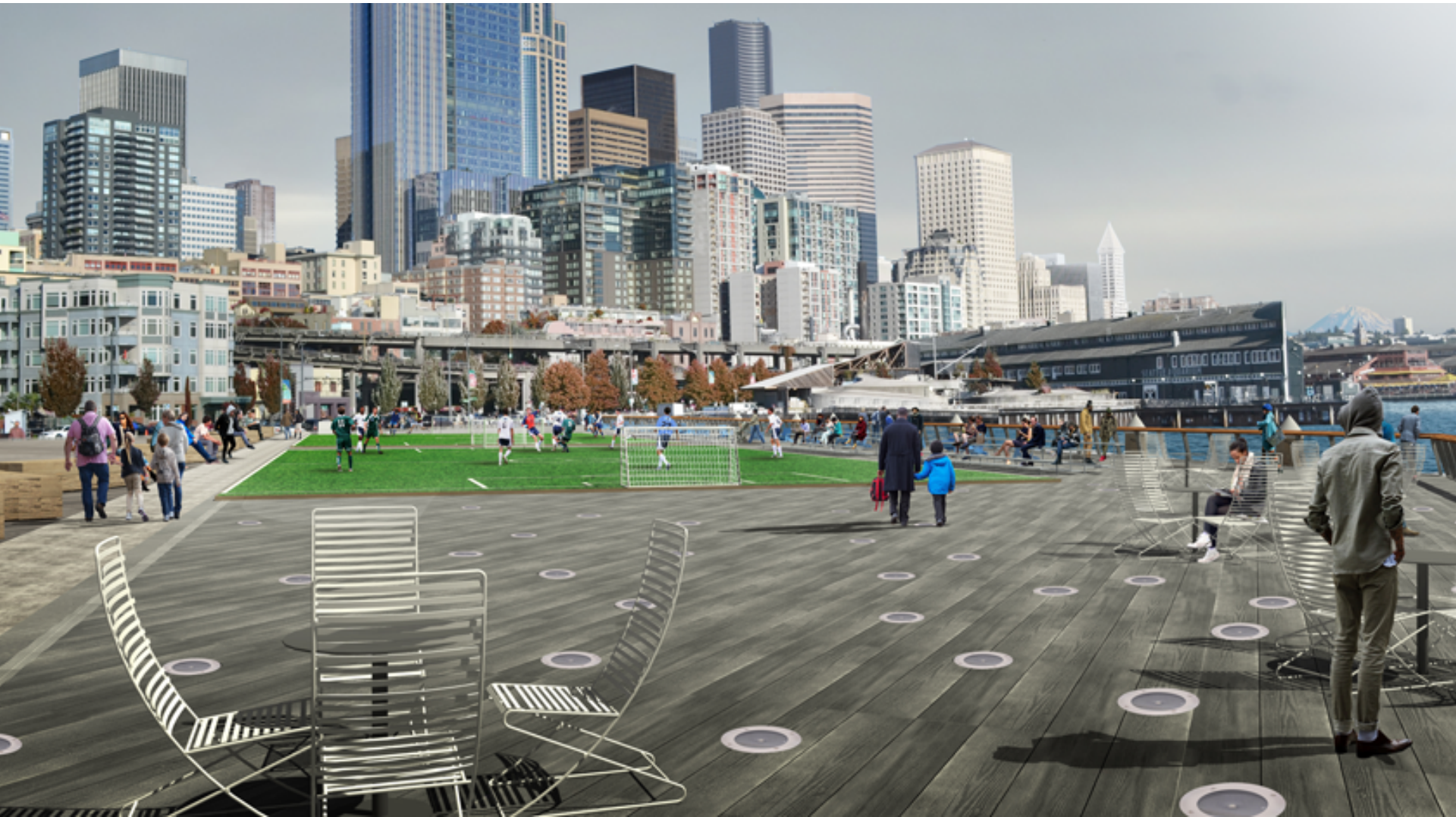
- Improve habitat connectivity/migration corridor
- Increase habitat diversity, quantity, and quality, and enhance food web
- Minimize exposure to contaminants

PIER 62 HABITAT – BUILDING ON THE ELLIOTT BAY SEAWALL PROJECT



- Install grating over habitat bench constructed as part of EBSP to provide increased light over the continuous migratory corridor
- Remove 815 creosote-treated timber piles to reduce potential exposure to contaminants
- Significantly reduce total number of piles to maximize ambient light beneath pier (approximately 180 piles installed)

PIER 62/63



PIER 62/63





